

# DIAMOND LACE PANEL INSPIRED BY WORKS OF CHRISTINE DUCHROW

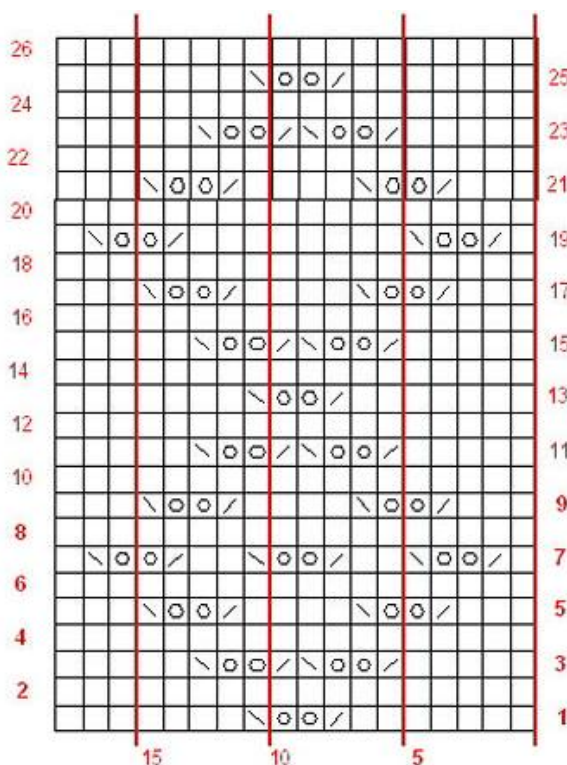
A knitting pattern

© Kim Salazar, 2008, 2012; <http://www.string-or-nothing.com>



Another panel lace design, adapted for use in socks. This 16 stitch wide lace panel (shown with two "spacer stitches" below to bring count to 18) fits handily around my 72-stitch sock ankles. It was inspired by double eyelet lace panels appearing in

*The Knitted Lace Patterns of Christine Duchrow, Volume II*, edited by J. & K. Kliot. The redaction into modern notation and elaboration of the pattern are my own.



Repeat complete in 18 stitches and 26 rows.  
No edge stitches shown.

### Symbols used

- Knit
- SSK
- Yarn over
- K2tog

For variants, work only rows 1-12, or rows 13-26.

graph and narrative (c) 2008  
by Kim Brody Salazar,  
kbsalazar@comcast.net  
<http://www.wiseneedle.com>  
<http://string-or-nothing.com>